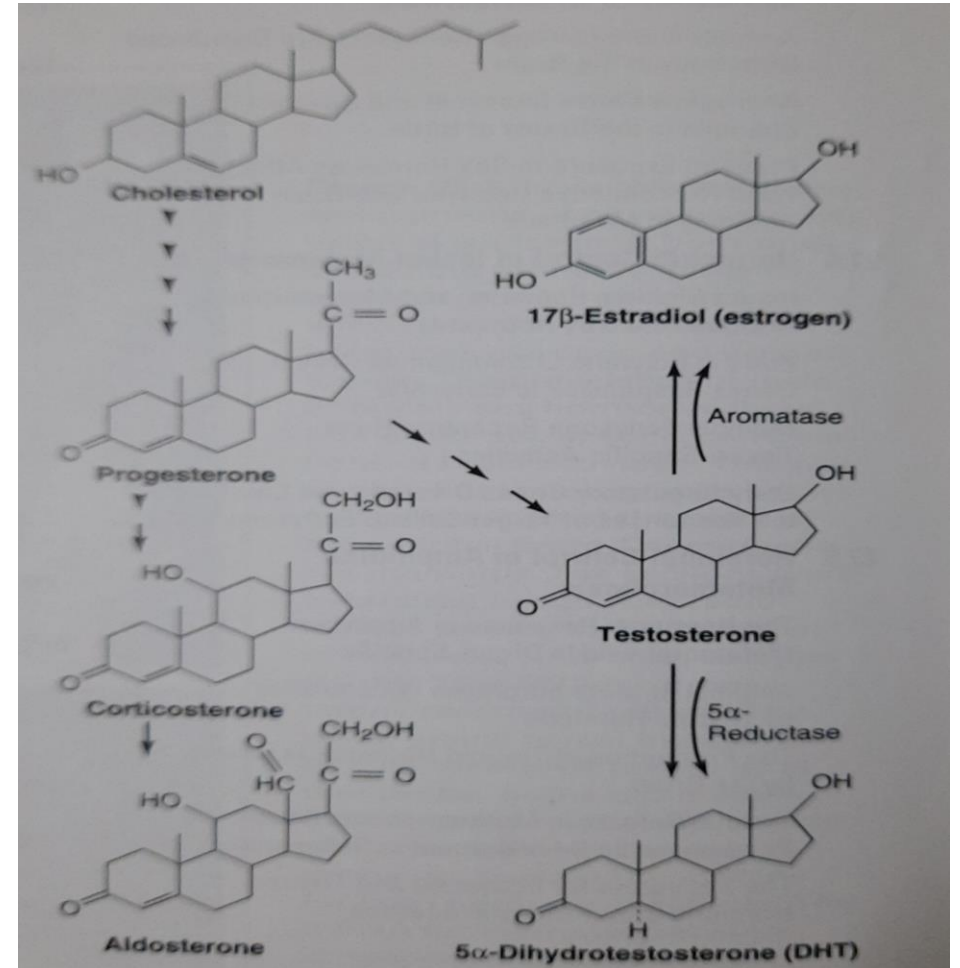
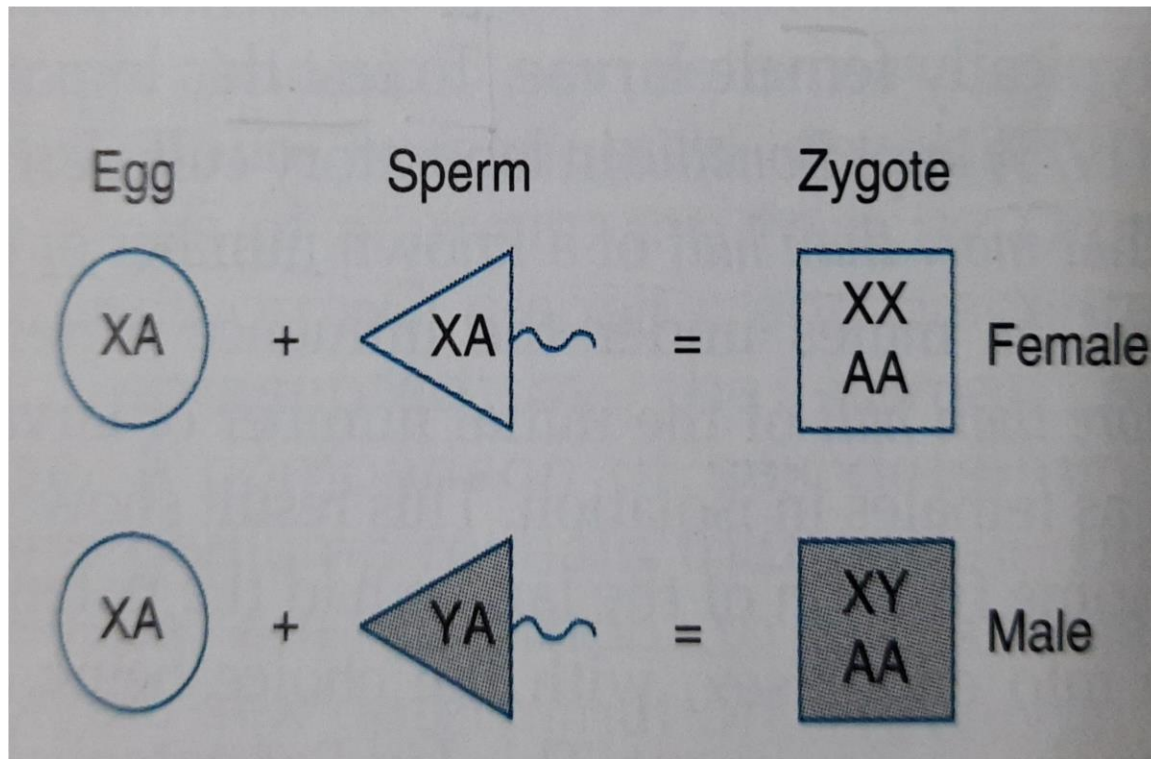
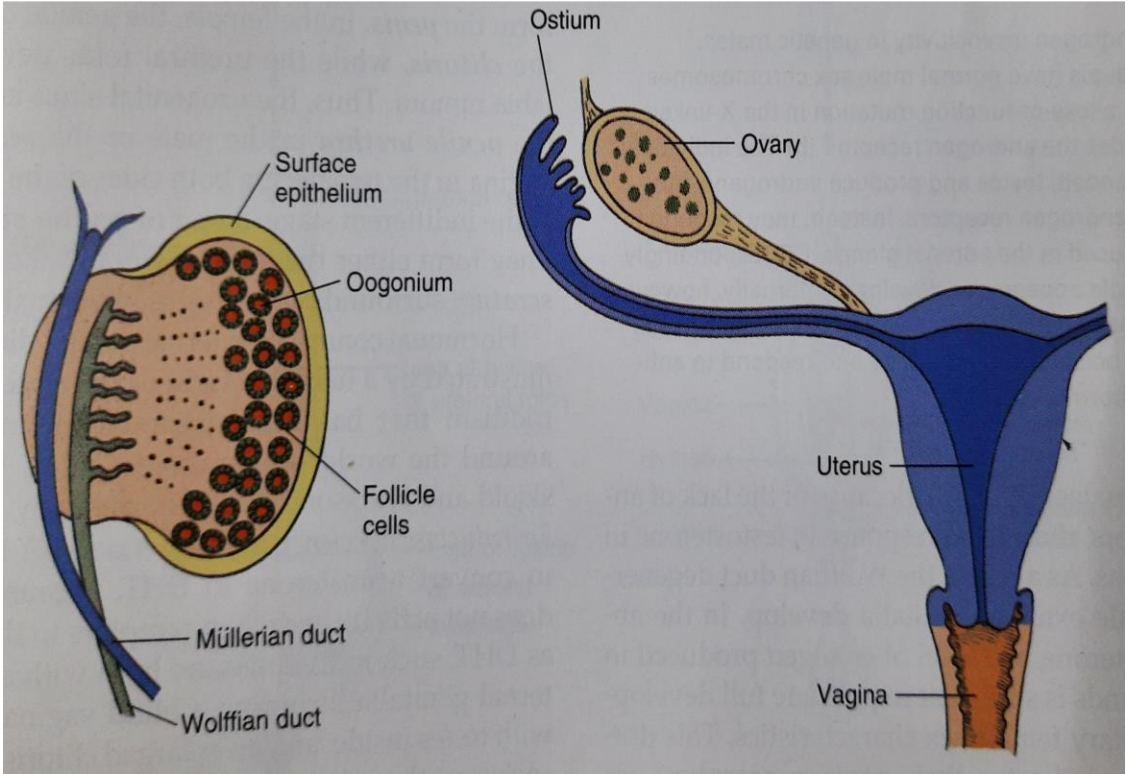
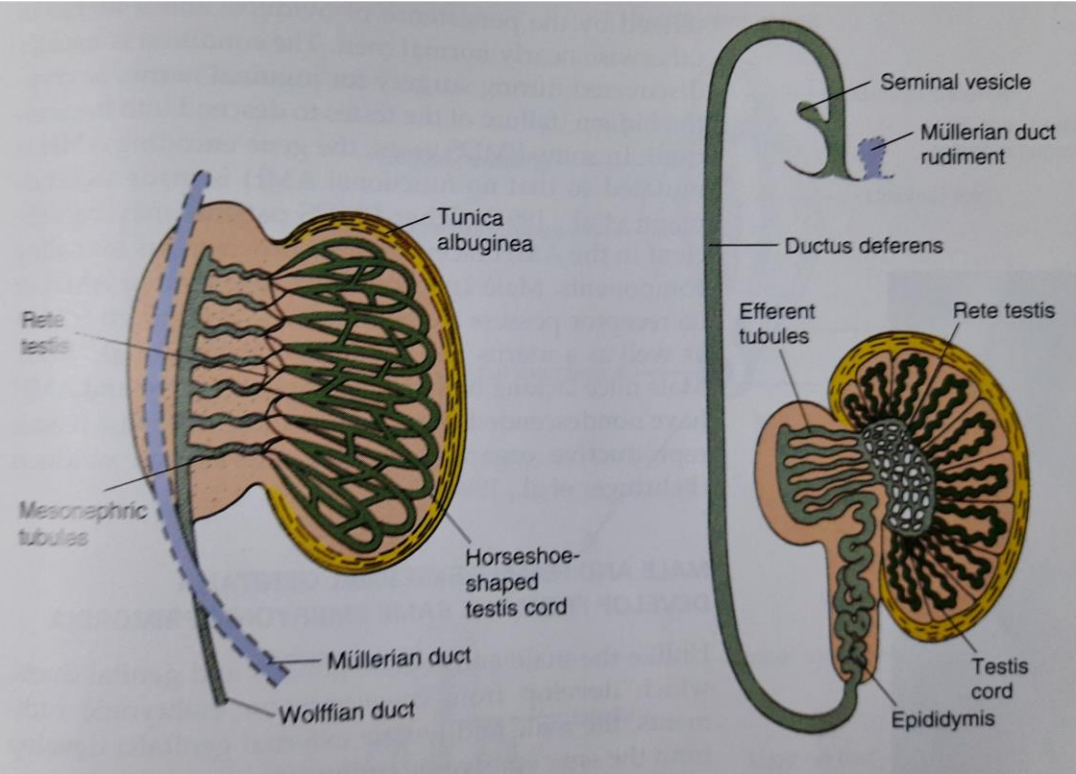


SEX DETERMINATION IN HUMAN

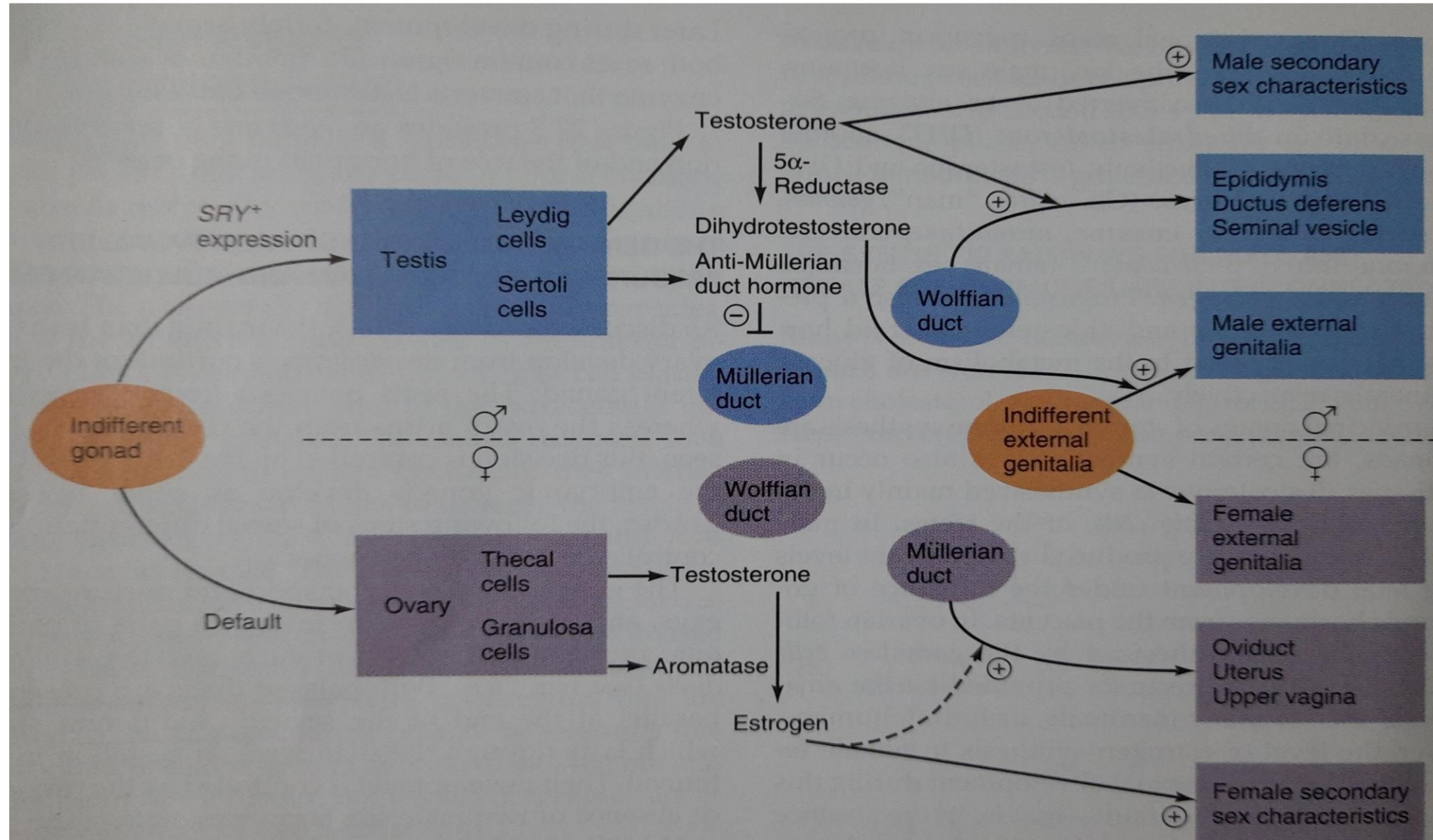
Primary and Secondary Sex Determination



Wolffian and Mullerian Ducts



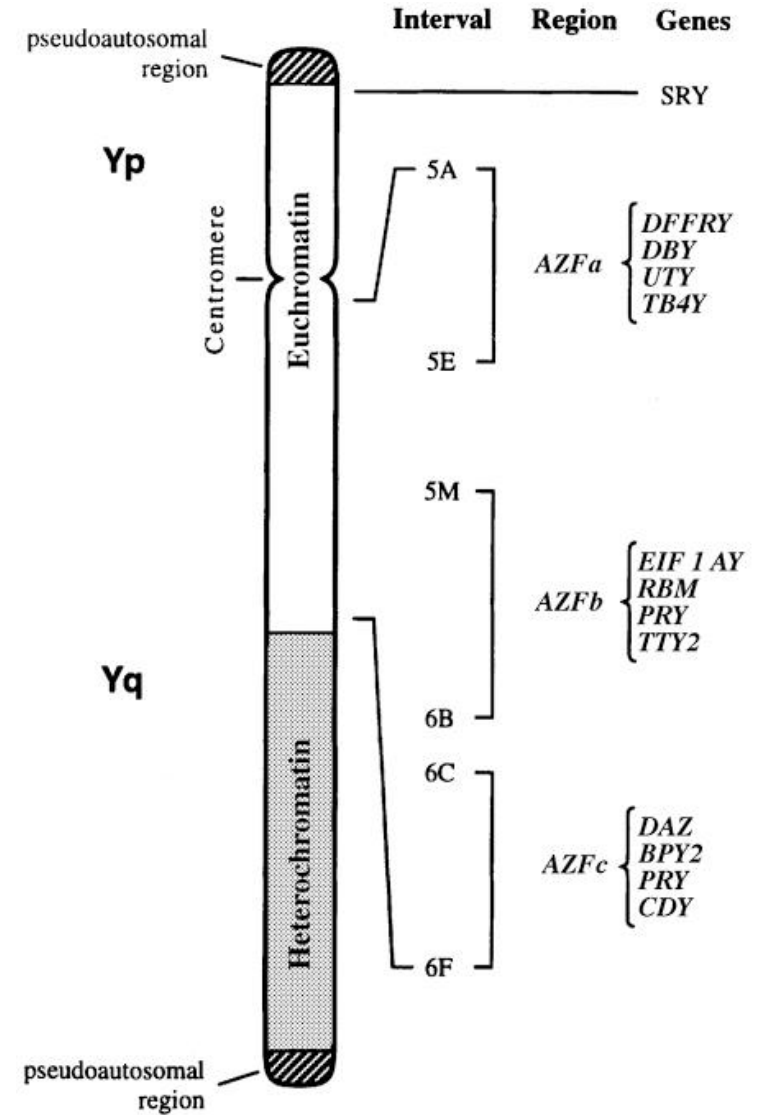
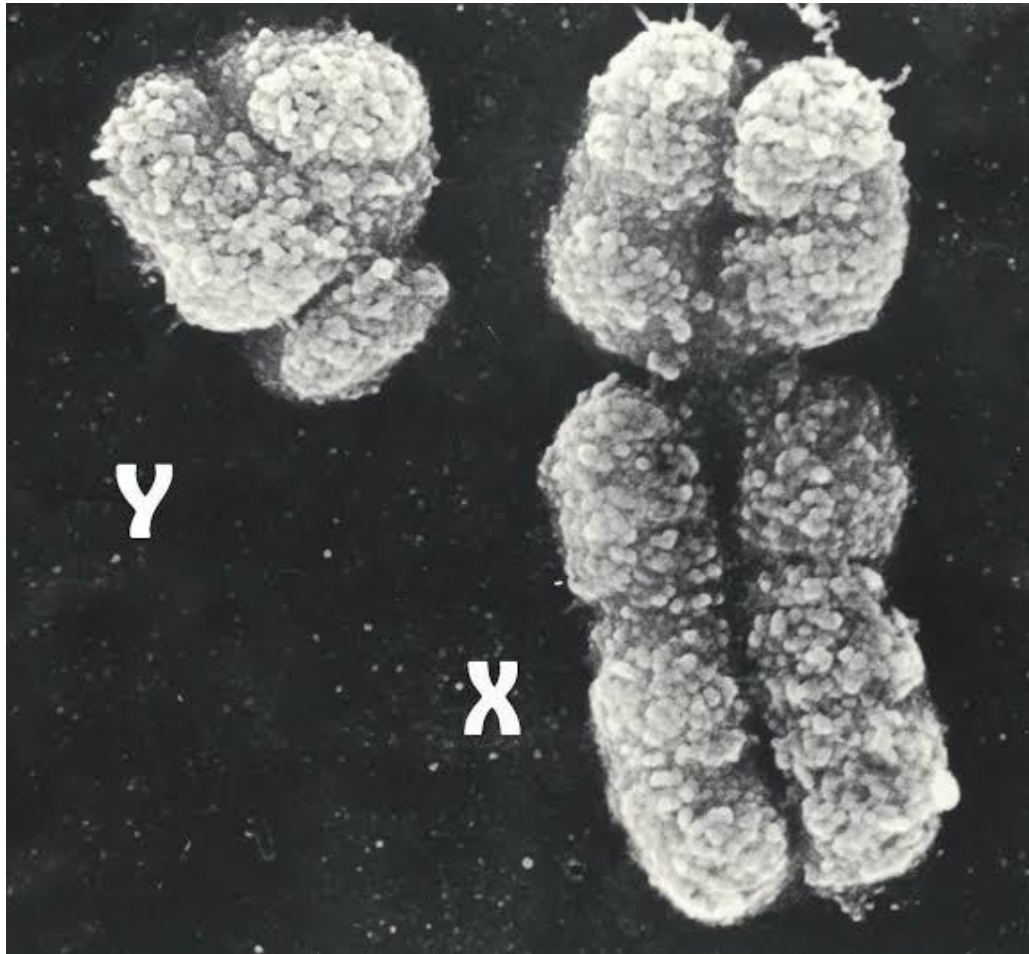
Somatic Sexual Development



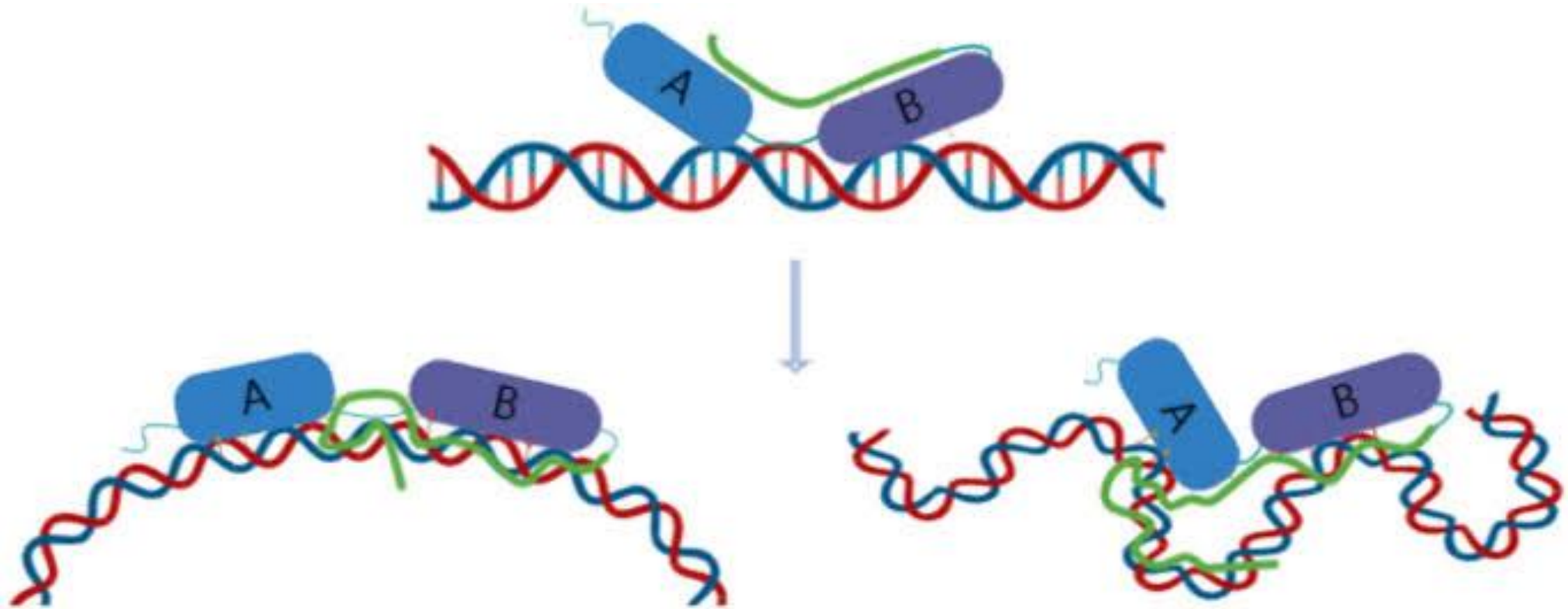
The GENES Involved

- **SRY+**
- **Sox9+**
- **Dax1+**
- **Wnt4+**
- **Amh+**
- **Sf1+**
- **Dmrt1+**
- **WT1+**

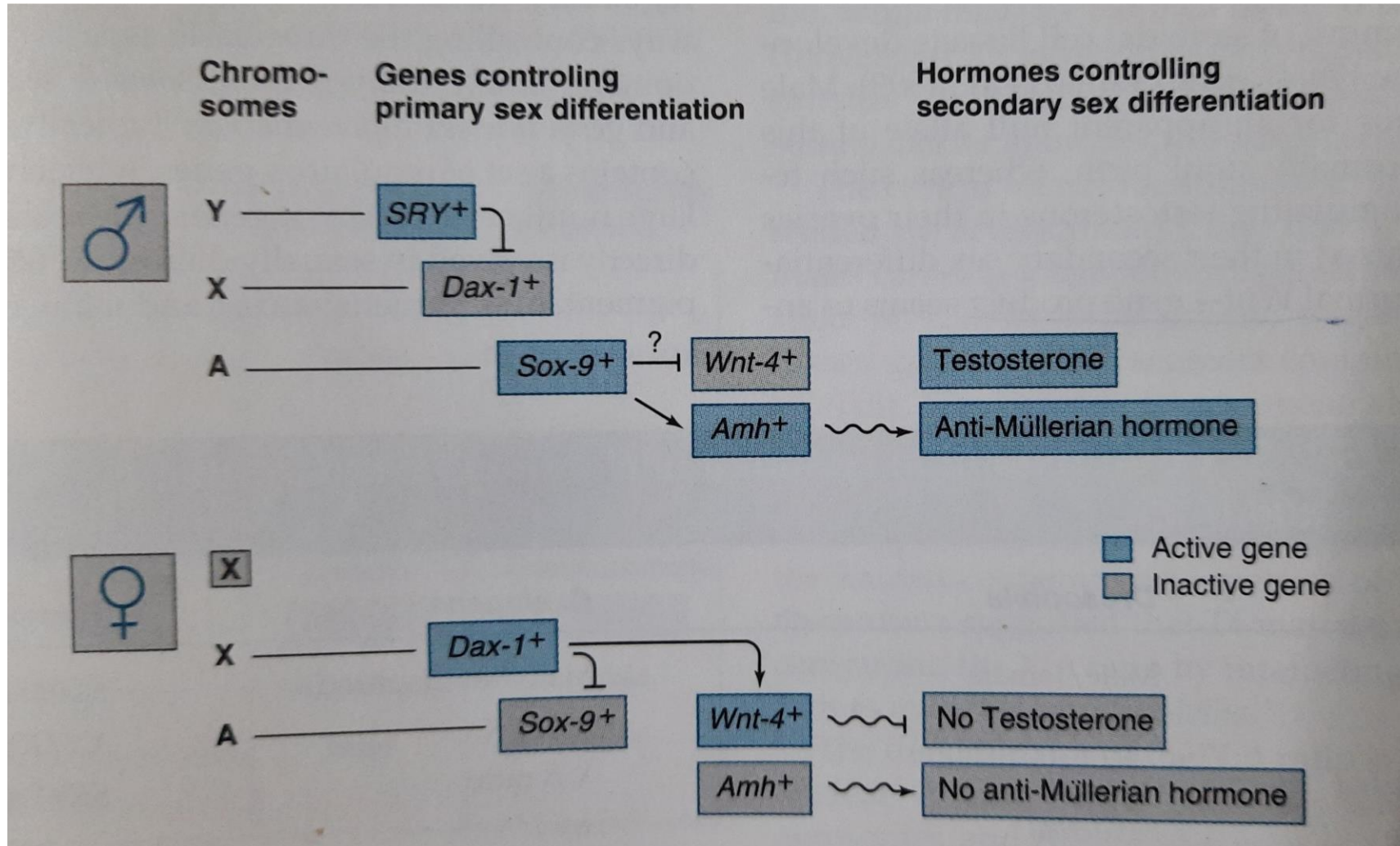
Position of SRY



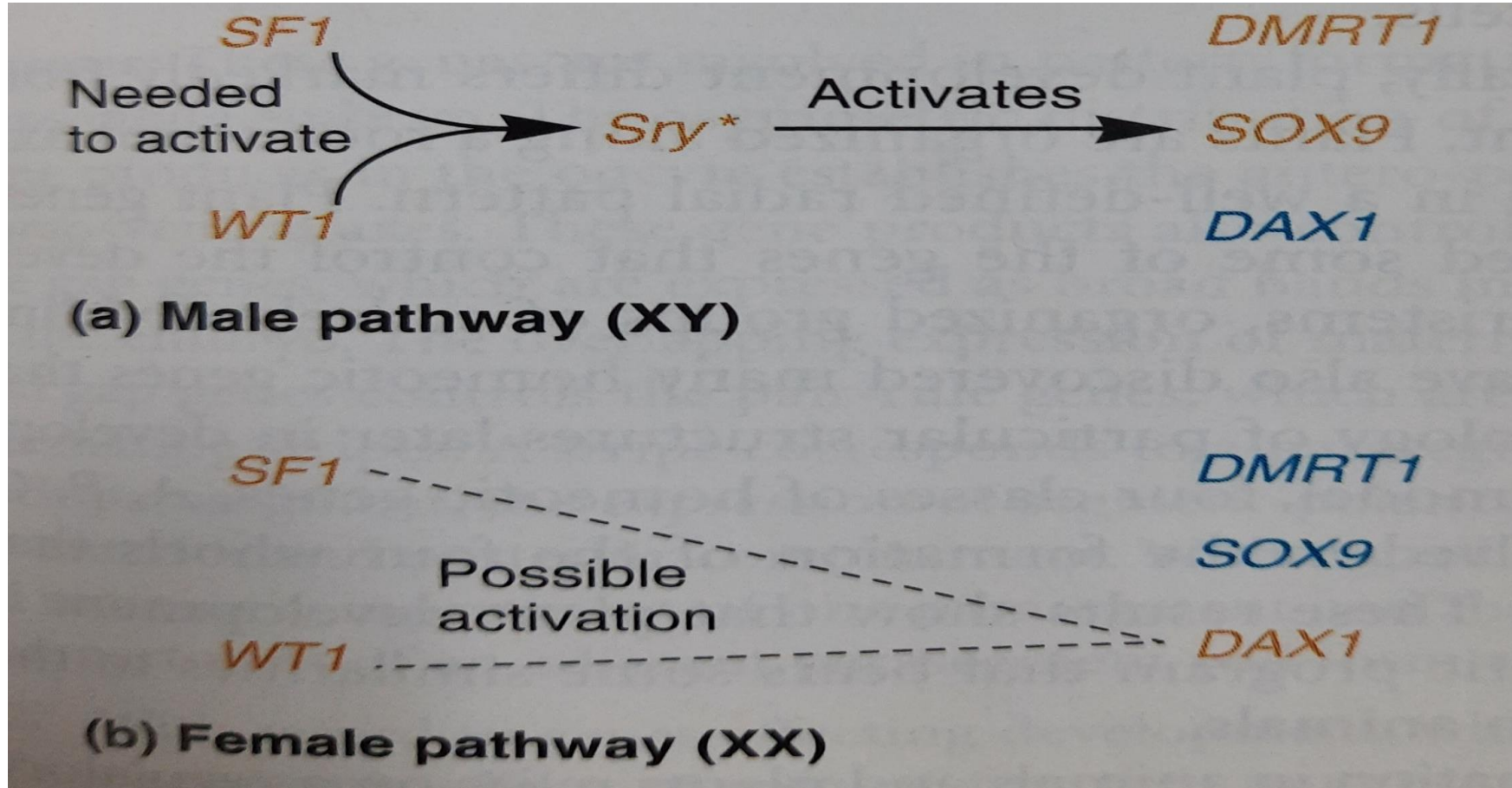
Role of HMG Box protein



SRY+ gene controls Primary Sex Determination



SRY determines Maleness



General Cascade

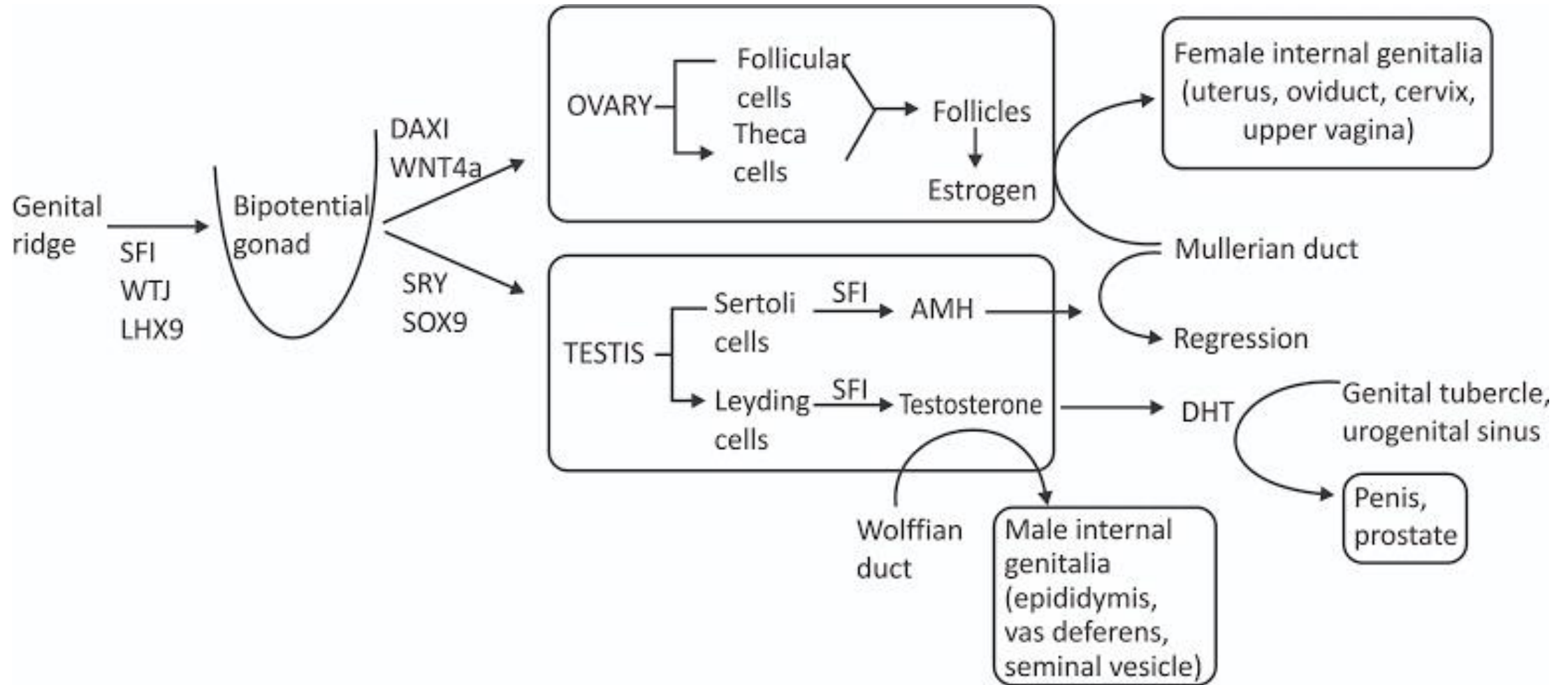


Fig. : Pathway showing sex determination in humans